



## LevelSender Telemetry

Model 9500



[Get Quote](#) | [More Info](#)

The LevelSender is a simple, low cost system designed to wirelessly send data from Solinst dataloggers in the field, via cellular communication, to multiple emails and an SMS recipient. You can receive data right on your smart device.

LevelSender remote stations are compact in design, which allows them to be discreetly installed inside a 2" diameter monitoring well or other housing.

Each LevelSender device has a single port to connect one datalogger. An optional splitter provides connections for two dataloggers, allowing you to install a Levellogger and Barologger in the same well.

Along with water level, temperature, conductivity, barometric, or rainfall data, battery level and status updates from the remote LevelSender are received with each data report.

## Advantages of the LevelSender

- Low cost, compact design for discreet installation
- Simple setup, operation and maintenance
- Extensive coverage with cellular communication
- Less need to travel to remote/hazardous locations
- Receive data on your smart device and PC
- Use database to import to your own website or list
- Remotely monitor battery level and status with each report
- Ideal for long-term water level monitoring projects
- Remote schedule changes sent from Home Station

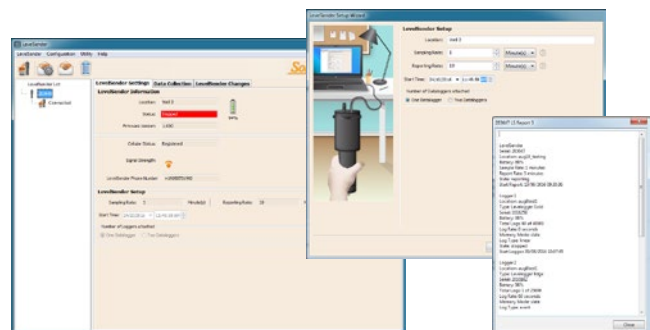


## Operation of the LevelSender

Initial setup for each LevelSender device is done using the LevelSender PC Software and a USB connection. The LevelSender is programmed with a sampling rate to collect data from the connected dataloggers, and a report rate to send data to the "Home Station", and email and SMS recipients.

If more detailed data is desired, the dataloggers can be programmed to record independently in their internal memory.

Data is sent as text to each email and SMS recipient. Data is automatically saved on the Home Station PC in separate files, as well as a dynamically updated database. The database can be accessed using your own applications for posting to a website or other custom setup. Data can also be viewed in the LevelSender Software, or files can be exported for use in other programs.



Changes to the reporting schedule can be done directly through a USB cable and LevelSender Software. Alternatively, remote schedule changes can be sent to individual LevelSender stations by email from the Home Station, which will update the LevelSender at a next scheduled report.

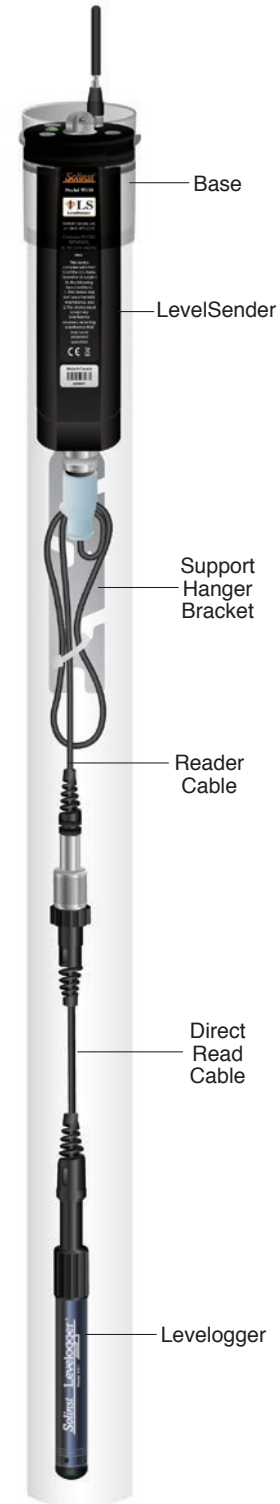
® Solinst is a registered trademark of Solinst Canada Ltd.

## Features of the LevelSender

- Sized to fit inside a standard 2" well casing
- Connection for up to two dataloggers on each device
- Wireless cellular communications
- Remote data sent via email or SMS messaging
- Both LevelSender and Home Station use dynamic IP
- Database is updated with each new data report
- View and export data using LevelSender Software
- Remote updates via email from Home Station

## LevelSender Specifications

Modem:	Cellular GSM
Communication:	Email or SMS data transfer, Dynamic IP
Antenna:	SMA Male Monopole 2dBi
Data File Type:	text, .xle, .sqlite
Sampling Interval:	1 minute - 99 hours
Reporting Interval:	5 minutes - 99 hours
Schedule Programming:	Directly via USB connection on the LevelSender or remotely via LevelSender Software (email)
Power Supply:	3 x AA 1.5V replaceable lithium batteries
Battery Life Example:	4 years: based on hourly sampling and daily reporting
Operating Temperature:	-20°C to 60°C
IP Rating:	IP64 (dust and splash proof)
Materials:	PVC, 316 stainless steel
Size:	2.5" x 9.375" (with antenna folded down)
Weight:	16.9 oz. (478 grams)
Compatible Dataloggers:	Levellogger Edge, Barologger Edge, Levellogger Junior Edge, Rainlogger Edge, as well as Levellogger Gold, Barologger Gold, Levellogger Junior, LTC Levellogger Junior and Rainlogger
Number of Connected Levelloggers:	1, or 2 using a splitter
Barometric Compensation:	Performed by user in Levellogger Software or external database



Single Levellogger Installation